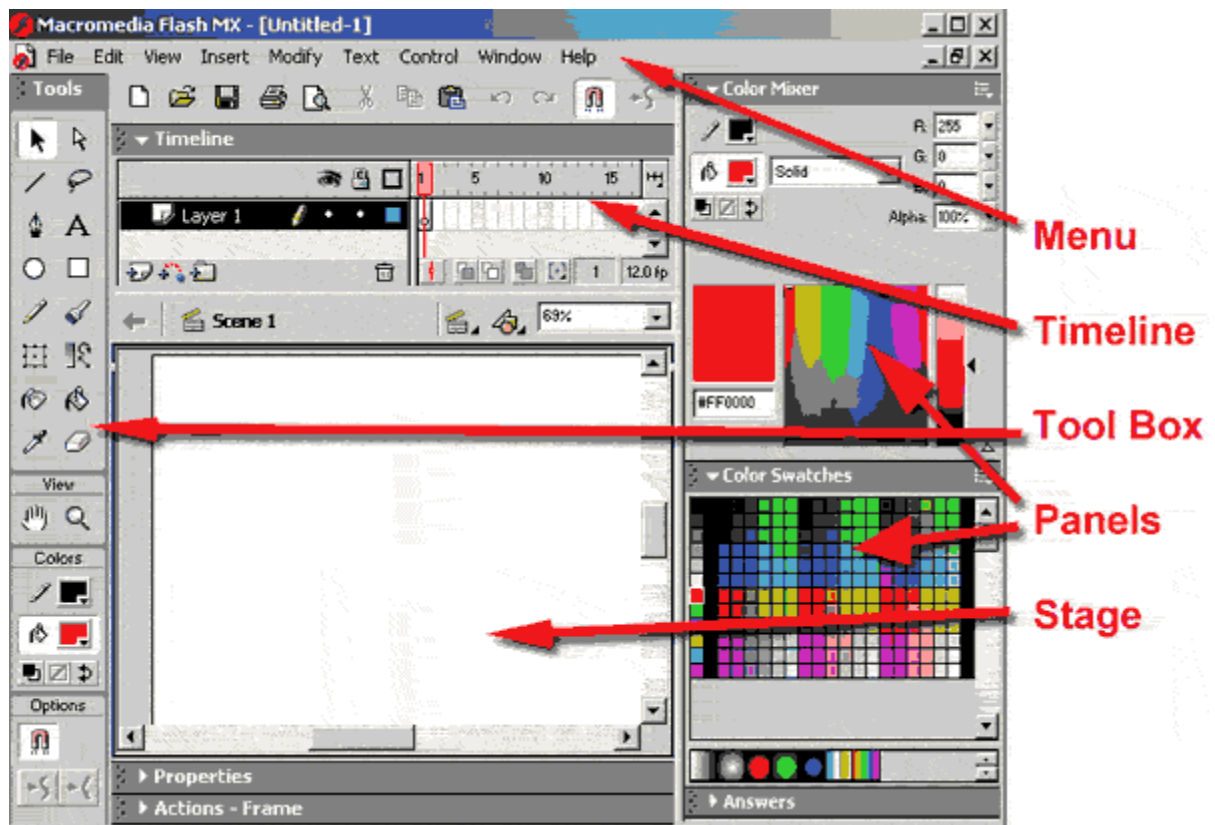


Flash Program Layout

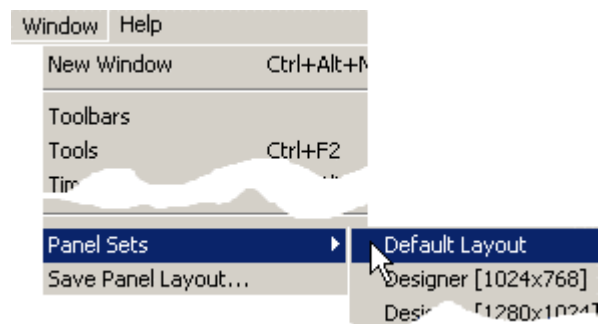
SorBose, Inc. All Rights Reserved. www.sorbose.com

- Open your program. You will see a layout like below. find the following items.
- Toolbox - editing tools
- Menu - for all program choices
- Stage - where your movie viewing area is
- Panels - where specific settings are for tools
- Timeline - time progresses from left to right
- Layers - stacked content for relative position on the stage
- Toolbar - main movie tools



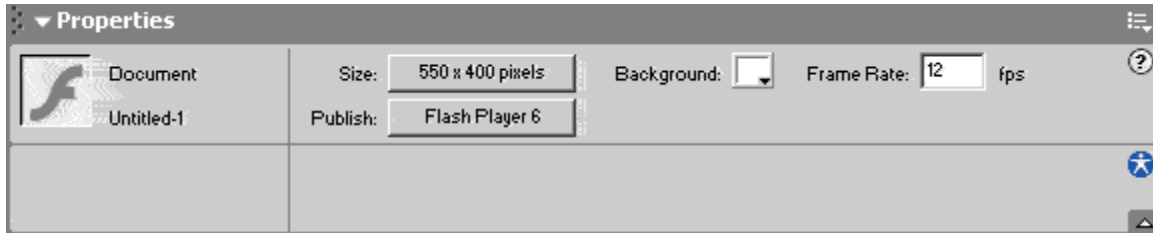
2. Click on your Window menu and select Panel Sets. Select default layout to set flash back to the original layout.

Window=> Panel Sets=> Default Layout



3. Click Window=> library F11. This opens the library that stores symbols, sounds, images for your movie.

4. Below the stage is the properties inspector. Click the triangle to the left of the work Properties to open and close the panel. Properties of the movie, a symbol, a frame, will be displayed here.



5. Right near the Properties inspector is the Action script panel. Use the triangle to the left of the work Action script to open and close it. This panel is used to create and assign scripts to buttons and frames.

